

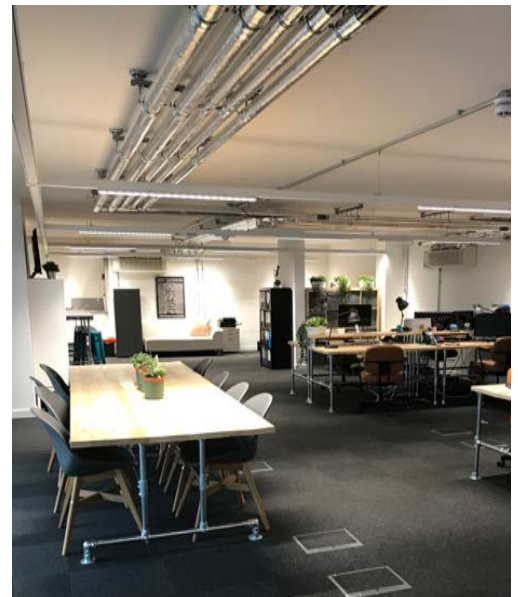
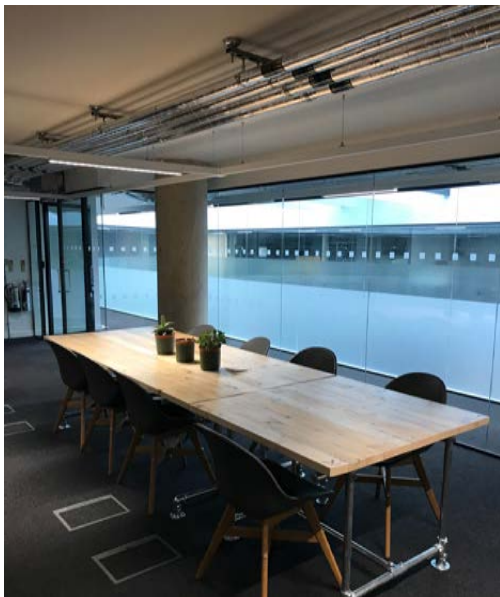
RIVERSIDESTUDIOS

OUR SPACE
YOUR FUTURE

Call us 020 8237 1000

Welcome to Riverside

Nestled at the foot of London's Hammersmith Bridge, Riverside Studios is a brand new, state-of-the-art centre housing a television studio, cinemas, theatres, restaurant and coffee shop and art gallery. With a rich heritage, and a fine tradition of being one of London's most vibrant creative hubs, this is your invitation to become part of the Riverside family by joining us as a tenant in one of our brand new office suites.



Stay
In Touch

ADDRESS

101 Queen Caroline Street
Hammersmith, London
W6 9BN

CONTACT

Phone : (0)20 8237 1000

Email : contact@riversidestudios.co.uk

SECOND FLOOR SUITE

For the emerging business that needs space to grow

209

Square Metres



Private Entrance



WiFi



Kitchen



Discount on catering



Toilets for exclusive use

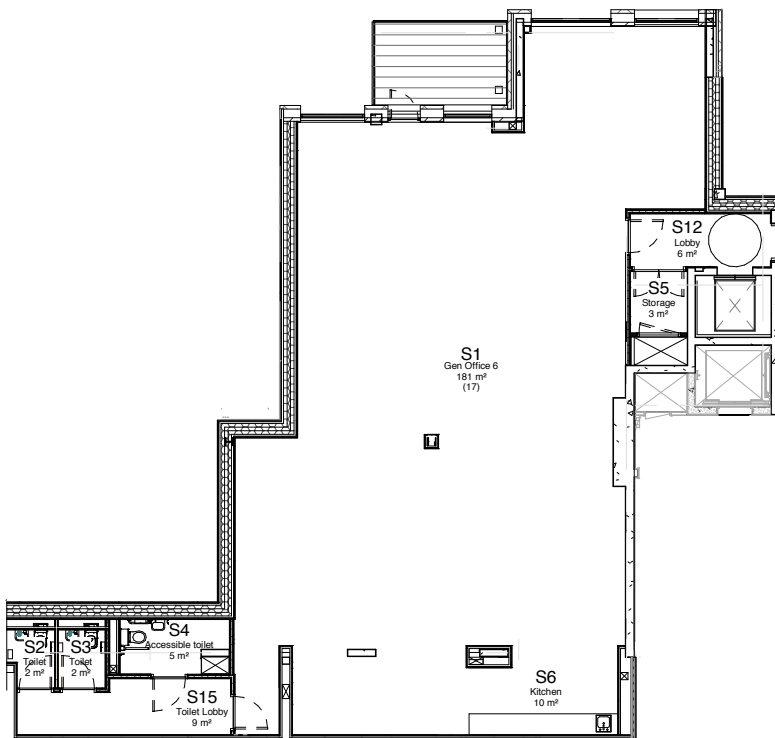
£10,000 pm

Space and Privacy

Our second floor suite has its own private entrance from Queen Caroline Street, elevator access and is a fully self contained unit. Featuring a kitchen/rest area, a balcony overlooking Hammersmith Bridge and two bathrooms, it is the ideal space for a young company that will need space to grow.

As part of the standard Riverside offering, your lease includes WiFi and landline telephony, full access to the on-site catering facilities with a 10% discount for all staff, and special rates to use our facilities - including cinema and event space - for your own client events and functions.

All prices quoted exclude Business Rates and Service Charge and are based on a 12-month lease agreement.





ADDRESS

101 Queen Caroline Street
Hammersmith, London
W6 9BN

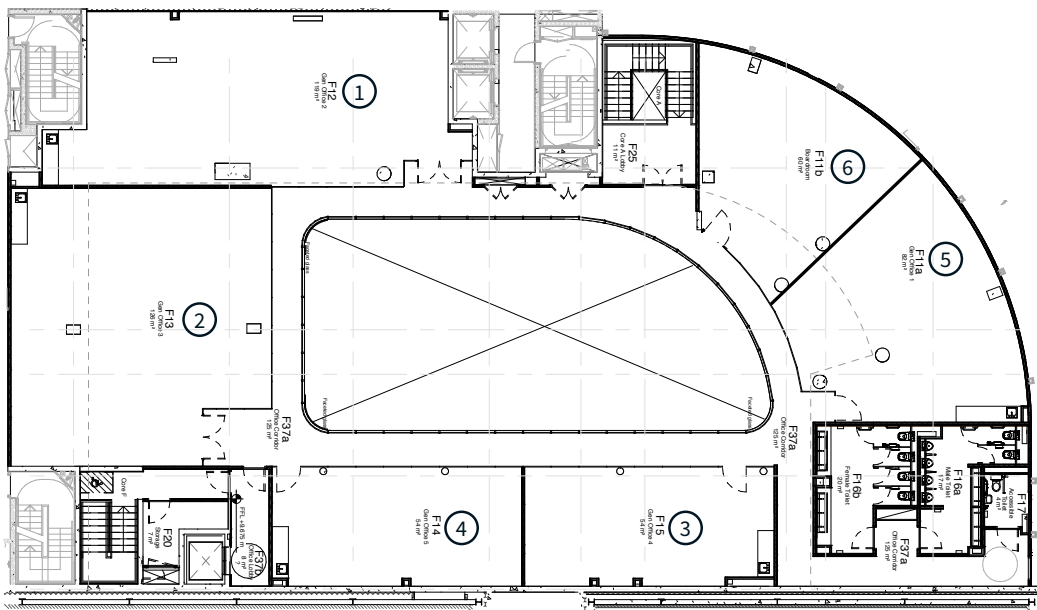
CONTACT

Phone : (0)20 8237 1000
Email : contact@riversidestudios.co.uk

FIRST FLOOR SUNSHINE

Set around a beautiful, naturally lit atrium, these offices provide a great environment and proximity to our ground floor cafe/bar and coffee shop.

The Spaces



- ① **Office F12** (116m²) *Already Let*
- ② **Office F13** (125m²) available at £6,447/month. This office is ideal for approx. 18 people and includes a small kitchenette.
- ③ **Office F14** (51m²) *Already Let*
- ④ **Office F15** (51m²) *Already Let*
- ⑤ **Office F11(a)** (82m²) available at £4,229/month. This office is ideal for approx. 12 people and includes a small kitchenette.
- ⑥ **Meeting Room** (60m²) a furnished boardroom with WiFi, large flat panel screen and seating for up to 12 people (boardroom style) or 25 people (theatre style). Available for £400 (full day) or £250 (half day)*

(*) Hourly rentals possible subject to availability. Permanent tenants in our offices get 1 day free use of the Meeting Room per month, and a 25% discount on further usage.